

# HIGH QUALITY AND MULTIPLE SOLUTIONS



**imprimio**  
Superswide digital printers  
*Litiumseries*



**UP TO 6"  
IN HEIGHT  
PRINTING.  
PRINT ON NON  
FLAT SURFACES  
UP TO 20MM.**

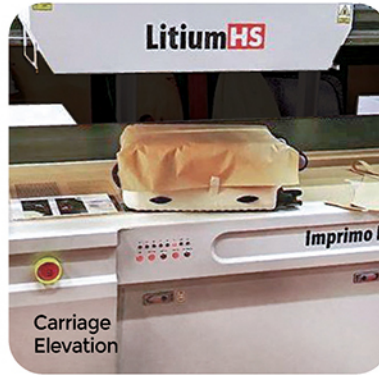
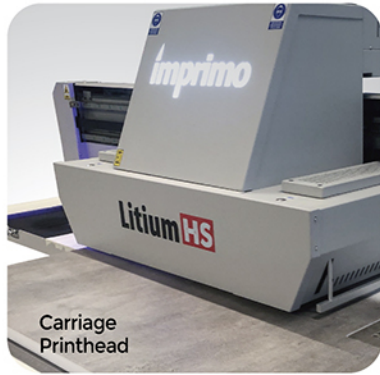


- High resolution and quality.
- Ricoh print heads.
- Phoseon UV lamps, made in USA.
- White and varnish.
- Low energy consumption.



📍 2420 W 80 St. Unit 1  
Hialeah FL 33016  
☎ 954-272-8534  
+19549402776  
📞 +19542785930  
📧 pawsignstech  
✉ sales@pst-global.net

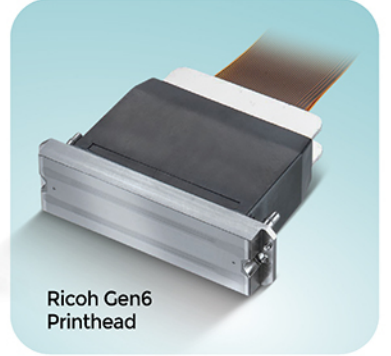
[www.pst-global.net](http://www.pst-global.net)



**APPLICATIONS:**

- Target a wide variety of markets such as: fine art, signs, decorations, glass, PVC, magnetic sheets, pens, etc.
- Print on cylindrical objects to customize bottles, etc.

**UPGRADE FOR  
MAXIMUM PRINT  
THICKNESS OF  
45CM / 17.7"**



**MAIN FEATURES:**

- Printhead: Ricoh technology.
- Automatic tool height detection.
- Phoseon air cooling UV Led Lamps made in USA.
- Litium HS can print on uneven surface up to 20mm of relieve.

Model	Litium Lite	Litium Plus	Litium HS
Printhead	Ricoh GH-2220 (4/6 pcs)	Ricoh Gen6 (5 pcs)	Ricoh Gen6 (3/6 pcs)
Drop size	2.5 pl	7 pl	7 pl
Colors	CMYK, White		
Inks	UV LED		
Print size	8' x 4' - 2.50 x 1.22 mm		
Vacuum bed	4 zones		
Max thickness	6" / 150 mm		
Speed	4 P - 355 ft <sup>2</sup> /h / 33 m <sup>2</sup> /h	4 P - 538 ft <sup>2</sup> /h / 50 m <sup>2</sup> /h	4 P - 538 ft <sup>2</sup> /h / 50 m <sup>2</sup> /h
	6 P - 204 ft <sup>2</sup> /h / 19 m <sup>2</sup> /h	6 P - 350 ft <sup>2</sup> /h / 32 m <sup>2</sup> /h	6 P - 350 ft <sup>2</sup> /h / 32 m <sup>2</sup> /h
	8 P - 107 ft <sup>2</sup> /h / 10 m <sup>2</sup> /h	8 P - 265 ft <sup>2</sup> /h / 25 m <sup>2</sup> /h	8 P - 265 ft <sup>2</sup> /h / 25 m <sup>2</sup> /h
Software	IMPRIMO RIP		
Computer	Included		
Dimensions	12.95 x 7.05 x 4.60 ft	13.94 x 7.08 x 4.72 ft	13.94 x 7.08 x 4.72 ft
	3.95 x 2.15 x 1.40 m	4.25 x 2.16 x 1.44 m	4.25 x 2.16 x 1.44 m
Weight	2000 Lbs / 900 Kg	4160 Lbs / 1800 Kg	4160 Lbs / 1800 Kg
Voltage	Single phase AC 220v / 25 Amp		
Environment	68°F - 85°F / 20°C - 28°C - 40% - 60% Humidity		

\* Speed can be affected depending the gradient mode.