



**ROLL TO ROLL
PRINTER FOR
FLEXIBLE MEDIA**



imprimo **Xpress**
Superwide digital printers **320**
Ricoh Gen5

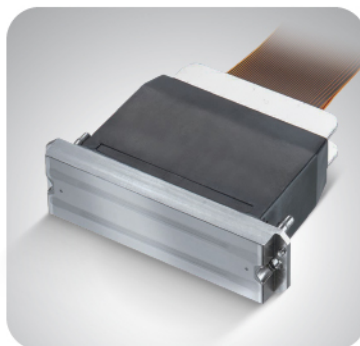


**XPRESS 320
UV OR ECO
SOLVENT**

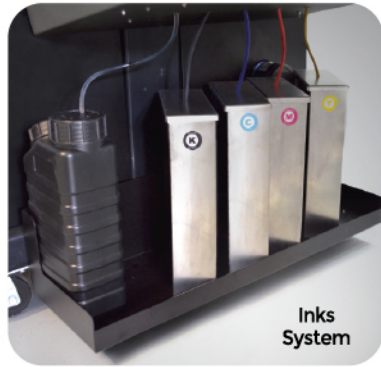


- 📍 2420 W 80 St. Unit 1
Hialeah FL 33016
- ☎ 954-272-8534
+19549402776
- 📞 +19542785930
- 🌐 pawsignstech
- ✉ sales@pst-global.net

www.pst-global.net

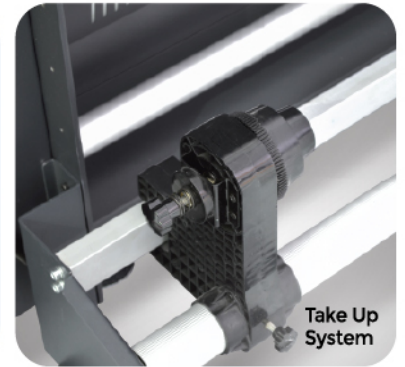


- Industrial Ricoh Printhead.
- High Speed and Resolution.
- PHOSEON air cooling UV Led. Lamps. Made in USA.



APPLICATIONS:

- Outdoor billboard, indoor decoration, wallpaper, adhesive, textile light box and others.

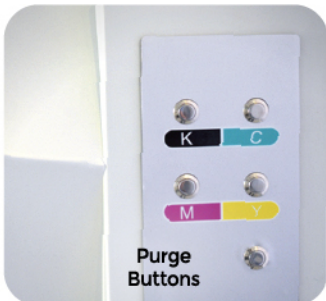


THE PERFECT MACHINE FOR YOUR PRODUCTION LINE



MAIN FEATURES

- High Production with the best quality.
- Phoseon UV Lamps made in USA.
- Ricoh printheads Mild Solvent or UV.
- Low energy consumption.



Model	Xpress 320 Mild Solvent	Xpress 320 UV
Printhead	Ricoh Gen5	Ricoh Gen5
Number of heads	4	4
Colors	CMYK	CMYK (Lc, Lm, white optional)
Inks	Eco or Mild Solvent	UV LED
Print size	126" / 3200mm	
Drying	Infrared	Phoseon UV Lamp
Speed	2 P - 1937 ft ² /h / 180 m ² /h	2 P - 1076 ft ² /h / 100 m ² /h
	4 P - 968 ft ² /h / 90 m ² /h	4 P - 538 ft ² /h / 50 m ² /h
	6 P - 624 ft ² /h / 58 m ² /h	6 P - 410 ft ² /h / 38 m ² /h
	8 P - 430 ft ² /h / 40 m ² /h	8 P - 300 ft ² /h / 28 m ² /h
Software	IMPRIMO RIP or CALDERA	
Computer	Included	
Dimensions	15.7 x 4.6 x 2.80 ft / 4.80 x 1.40 x 0.85 m	
Weight	2200 Lbs / 1000 Kg	
Voltage	Single AC 220v / 3800W	Single AC 220v / 3800W
Environment	68°F - 85°F / 20°C - 28°C - 40% - 60% Humidity	

* Speed can be affected depending the gradient mode.